



AQUAPANEL® Q4 Finish

Full-surface ready-to-use skim coat for smooth high quality finish

Description

The AQUAPANEL® Q4 Finish from Knauf Aquapanel is an innovative filler and water-repellent skim coat that can produce a fine finished surface up to Q4 standard when used as a coating on AQUAPANEL® Cement Board Indoor and AQUAPANEL® Cement Board SkyLite (only interiors). For contractors and installers, it offers a fast full surface treatment as an ideal base for smooth, glossy or finely textured wall coverings.

Area of application

When used as a coating on AQUAPANEL® Cement Board Indoor and AQUAPANEL® Cement Board SkyLite (only interiors), AQUAPANEL® Q4 Finish guarantees a flat, smooth, high quality finish for walls and ceilings. No reinforcing is required for wall applications. It can also be used as a surface finish for interior ceiling applications when used on top of AQUAPANEL® SkyLite Joint Filler & Skim Coating, as well as for impact resistant walls, when used on top of AQUAPANEL® Joint Filler & Skim Coating – white with AQUAPANEL® Reinforcing Mesh.

AQUAPANEL® Q4 Finish can be applied in humid areas but is not suitable for areas subjected to water spray.

Preparation of the substrate

AQUAPANEL® Cement Board Indoor and AQUAPANEL® Cement Board SkyLite must be fixed firmly onto a structurally supporting framework according to installation guidelines. Joints in ceilings must be filled with AQUAPANEL® Joint Filler & Skim Coating – white (AQUAPANEL® Cement Board Indoor) or AQUAPANEL® SkyLite Joint Filler & Skim Coating (AQUAPANEL® Cement Board SkyLite) and be reinforced with AQUAPANEL® Tape (10 cm). The surface must be dry, clean and dust free. The subsurface is primed with AQUAPANEL® Board Primer.

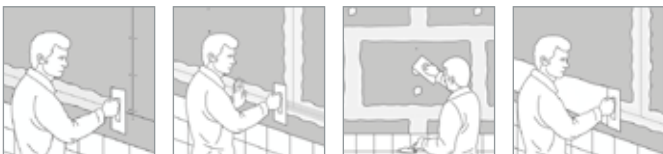
Processing/application

Stir AQUAPANEL® Q4 Finish well. If required, thin with a small amount of water. Use clean mixing containers and tools (stainless steel smoothing float).

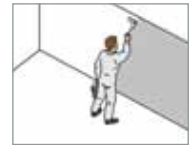
AQUAPANEL® Q4 Finish is used without reinforcing mesh as a skim coat on walls above tiles. The maximum coating depth is 2 mm per application.

In walls, fill all screw heads and board joints -which have already been glued with AQUAPANEL® Joint Adhesive (PU) - with AQUAPANEL® Q4 Finish. Embed cover strips over the joints (for example Knauf glass fibre joint cover strips).

Sand away any irregularities and apply a second coat of AQUAPANEL® Q4 Finish (at least 20 cm wide), re-embedding the screw heads. Once this has dried, sand away any unevenness.



For the coating above the tiled section, apply AQUAPANEL® Q4 Finish evenly with a float (coating depth at least 1 mm). Then fill in any cavities in the joints and smooth the surface structure (if necessary, sand after drying). Subsequently apply an additional surface coating of AQUAPANEL® Q4 Finish (coating depth approx. 0.5 mm) and, when dry, sand with abrasive paper (grade 120 or finer). The drying time is approx. 24 hrs per mm of coating thickness, depending on the temperature and humidity.



AQUAPANEL® Q4 Finish can also be applied as a full surface finish on AQUAPANEL® Joint Filler and Skim Coating – white with AQUAPANEL® Reinforcing Mesh (walls) or on AQUAPANEL® SkyLite Joint Filler & Skim Coating (ceilings). For application of AQUAPANEL® Q4 Finish by machine, we recommend the Knauf PFT Samba XL.

Other indications

AQUAPANEL® Q4 Finish can be painted over with water emulsion paints, acrylic paints, water emulsion silicate colours and lime colours.

Specifications

Colour	white
Reaction to fire	A2-s1, d0
Open time	> 25 minutes (at 23°C and 63% rel. humidity)
Drying time	approx. 24 hrs (at 23°C and 63% rel. humidity)
Max. grain size	50 µm
Viscosity	29-31 Pa.s

Material coverage

Approx. 1.7 kg/m²/mm coating depth

Working time

Manual application: approx. 7 – 11 minutes (depending on surface quality)

Working temperature/climate

Skim coating should only be done once the AQUAPANEL® Cement Board Indoor and AQUAPANEL® Cement Board SkyLite panels have acclimatised to the ambient climatic conditions. The material, ambient and background temperature must not fall below +5°C.

Method of delivery/storage

- 20 kg/pail
- Store in dry, cool and frost-free conditions
- Unopened storage life approx. 12 months

Item Code 82637

AQUAPANEL®

▶ www.AQUAPANEL.com

@ aquapanel.info@knauf.com

AQUAPANEL® is a technologically advanced building system. Because it's a system, it involves clear step-by-step process from design idea to project completion. AQUAPANEL® cement board panels, accessories and services work in unison – you can be certain that your project will all come together as planned.

AQUAPANEL® is a registered trademark.

Knauf Aquapanel GmbH & Co. KG, Zur Helle 11, 58638 Iserlohn, Germany

All technical changes reserved. Only the current printed instructions are valid. Our warranty is expressly limited to our products in flawless condition. The constructional and structural properties and characteristic building physics of Knauf systems can solely be ensured with the exclusive use of Knauf system components, or other products expressly recommended by Knauf. All application quantities and delivery amounts are based on empirical data that are not easily transferable to other deviating areas. All rights reserved. All amendments, reprints and photocopies, including those of excerpts, require the express permission of Knauf Aquapanel GmbH & Co. KG, Zur Helle 11, 58638 Iserlohn, Germany.